



ZERA

ESxBx00
Product Catalogue

Doc.No: 100352723
Version from: 01.07.2024

Device



ESCB200 Electronic Compensated Standard Current Burden

Inclusive adjustment and factory calibration.

Ord.No. **1016730xx**

Calibration	Ord. No.
Factory 50/60 Hz / ANSI	xx → 04
DAkKS 50 Hz	xx → 02
DAkKS 60 Hz	xx → 03

The programmable electronic compensated standard current burden ESCB can be used as load for manual and automatic tests of current instrument transformers. The ESCB is characterized particularly by the user-friendly menu guidance using function keys and 6,4" LCD display.



ESVB200 Electronic Compensated Standard Voltage Burden

Inclusive adjustment and factory calibration.

Ord.No. **1016728xx**

Calibration	Ord. No.
Factory 50/60 Hz / ANSI	xx → 04
DAkKS 50 Hz	xx → 02
DAkKS 60 Hz	xx → 03

The programmable electronic compensated standard voltage burden ESVB can be used as load for manual and automatic tests of voltage instrument transformers. The ESVB is characterized particularly by the user-friendly menu guidance using function keys and 6,4" LCD display.



ESCB100 Electronic Compensated Standard Current Burden

Inclusive adjustment and factory calibration for one mains frequency.

Ord.No. **1016731xx**

Calibration	Ord.No.
Factory 50 Hz	xx → 00
Factory 60 Hz	xx → 01
DAkKS 50 Hz	xx → 02
DAkKS 60 Hz	xx → 03

The burdens ESCB100 is used for manual testing of instrument transformers acc. to IEC or ANSI/IEEE at fixed 3 secondary current ranges 1 A, 2 A and 5 A with **fixed burden steps at 50 Hz or 60 Hz** as load.



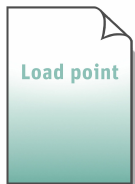
ESVB100 Electronic Compensated Standard Voltage Burden

Inclusive adjustment and factory calibration for one mains frequency.

Ord.No. **1016729xx**

Calibration	Ord.No.
Factory 50 Hz	xx → 00
Factory 60 Hz	xx → 01
DAkKS 50 Hz	xx → 02
DAkKS 60 Hz	xx → 03

The burdens ESVB100 is used for manual testing of instrument transformers acc. to IEC or ANSI/IEEE at 6 fixed secondary voltage ranges (to be defined) with **fixed burden steps at 50 Hz or 60 Hz** as load.



Secondary Voltage Range for ESVB100

A total of **6** voltage ranges can be selected.

- 00**=100 V, **01**=110 V, **02**=115 V, **03**=120 V,
- 04**=190 V, **05**=200 V, **06**=230 V,
- 07**=100/3 V, **08**=110/3 V, **09**=115/3 V, **10**=120/3 V,
- 11**=190/3 V, **12**=200/3 V, **13**=230/3
- 14**=100/√3 V, **15**=110/√3 V, **16**=115/√3 V, **17**=120/√3 V,
- 18**=190/√3 V, **19**=200/√3 V, **20**=230/√3 V

xx please select the voltage range

Ord.No. **1013166xx**

Power Cords



Power cord "Class I grounded plug type E/F to IEC 60320 C13", 2.5 m

For supply via power socket.

- 1x class I grounded plug type E/F (CEE 7/7)
- 1x socket IEC 60320 C13, angled

Ord.No.

M00481004



Power cord "Plug type B to IEC 60320 C13", 2.5 m

For supply via power socket.

- 1x plug type B
- 1x socket IEC 60320 C13

Ord.No.

X00006459



Power cord "Plug type I to IEC 60320 C13", 2.5 m

For supply via power socket.

- 1x plug type I (AS/NZS 3112, 3-pin)
- 1x socket IEC 60320 C13

Ord.No.

X00006460



Power cord "Plug type G (BS 1363) to IEC 60320 C13", 2.5 m

For supply via power socket.

- 1x Plug type G (BS 1363)
- 1x socket IEC 60320 C13

Ord.No.

X00009832



Power cord "Plug type H" to IEC 60320 C13", 1.8 m

For supply via power socket.

- 1x Plug type H
- 1x socket IEC 60320 C13

Ord.No.

100929903

Standard Accessories (see also Special Accessories)



Set - Fuse 1,6 A / time-lag Type
10 pcs.

Ord.No. **101393500**



Set - Fuse 3,15 A /semi time-lag Type
10 pcs.

Ord.No. **101393600**



High voltage protection box HVP100 for ESVBx00

To avoid damages due to overvoltages.
Please see datasheet HVP100_MAN_EXT_EN_V100.pdf
for more information.

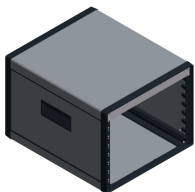
Ord.No. **101304900**



Desktop case for ESVB100/200

Desktop case for ESVB100 or ESVB200, rear side open

Ord.No. **101435500**



Desktop case for ESCB100/200

Desktop case for ESCB100 or ESCB200, rear side open

Ord.No. **101435600**

Documentation



Complete Documentation
as pdf files on USB flash drive

Ord.No. **100090716**

Readjustment (for Service)



Adjustment of ESCBx00

Note: Calibration and Calibration report
are not included.

Ord.No. **100033880**



Adjustment of ESVBx00

Note: Calibration and Calibration report
are not included.

Ord.No. **100033881**

Calibration (for Service)

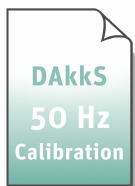


**Factory calibration for ESCB200,
50 Hz / 60 Hz / ANSI**
incl. ZERA calibration report.

Load points according to ZERA regulations.
Summary of used load points
can be downloaded at www.zera.de.

Additional load points are subject to charges.

Ord.No. **100890825**



DAkKS Calibration for ESCB200, 50 Hz
incl. DKD Calibration Certificate

Load points according to ZERA regulations.
Summary of used load points
can be downloaded at www.zera.de.

Additional load points are subject to charges.

Ord.No. **100006880**

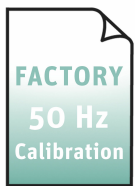


DAkKS Calibration for ESCB200, 60Hz
incl. DKD Calibration Certificate

Ord.No. **100006889**

Load points according to ZERA regulations.
Summary of used load points
can be downloaded at www.zera.de.

Additional load points are subject to charges.

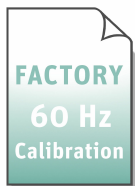


Factory calibration for ESCB100, 50 Hz
incl. ZERA calibration report

Ord.No. **101242316**

Load points according to ZERA regulations.
Summary of used load points
can be downloaded at www.zera.de.

Additional load points are subject to charges.

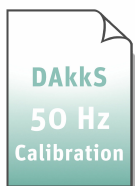


Factory calibration for ESCB100, 60 Hz
incl. ZERA calibration report

Ord.No. **101242317**

Load points according to ZERA regulations.
Summary of used load points
can be downloaded at www.zera.de.

Additional load points are subject to charges.



DAkKS Calibration for ESCB100, 50 Hz
incl. DKD calibration Certificate

Ord.No. **101173925**

Load points according to ZERA regulations.
Summary of used load points
can be downloaded at www.zera.de.

Additional load points are subject to charges.



DAkKS Calibration for ESCB100, 60 Hz
incl. DKD calibration Certificate

Ord.No. **101173926**

Load points according to ZERA regulations.
Summary of used load points
can be downloaded at www.zera.de.

Additional load points are subject to charges.



**Factory calibration for ESVB200,
50 Hz / 60 Hz / ANSI**
incl. ZERA calibration report.

Ord.No. **100890826**

Load points according to ZERA regulations.
Summary of used load points
can be downloaded at www.zera.de.

Additional load points are subject to charges.

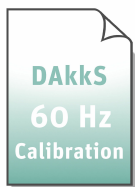


DAkKS Calibration for ESVB200, 50 Hz
incl. DKD Calibration Certificate

Ord.No. **100006881**

Load points according to ZERA regulations.
Summary of used load points
can be downloaded at www.zera.de.

Additional load points are subject to charges.

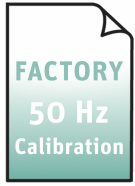


DAkKS Calibration for ESVB200, 60Hz
incl. DKD Calibration Certificate

Ord.No. **100006890**

Load points according to ZERA regulations.
Summary of used load points
can be downloaded at www.zera.de.

Additional load points are subject to charges.

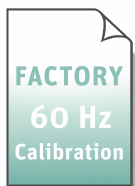


Factory calibration for ESVB100, 50 Hz
incl. ZERA calibration report

Ord.No. **101242312**

Load points according to ZERA regulations.
Summary of used load points
can be downloaded at www.zera.de.

Additional load points are subject to charges.



Factory calibration for ESVB100, 60 Hz
incl. ZERA calibration report

Ord.No. **101242313**

Load points according to ZERA regulations.
Summary of used load points
can be downloaded at www.zera.de.

Additional load points are subject to charges.

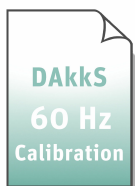


DAkKS Calibration for ESVB100, 50 Hz
incl. DKD calibration Certificate

Ord.No. **101173923**

Load points according to ZERA regulations.
Summary of used load points
can be downloaded at www.zera.de.

Additional load points are subject to charges.



DAkKS Calibration for ESVB100, 60 Hz
incl. DKD calibration Certificate

Ord.No. **101173924**

Load points according to ZERA regulations.
Summary of used load points
can be downloaded at www.zera.de.

Additional load points are subject to charges.

ZERA GmbH
Humboldtstrasse 2a
D-53639 Koenigswinter
Phone: +49 (0)2244 9277-0
E-Mail: zera@zera.de
Internet: www.zera.de
Managing Director: Horst Wächter
Headquarter: Königswinter

Commerzbank Bonn
IBAN: DE29 3804 0007 0113 3131 00
SWIFT (BIC): COBADEFF380

Kreissparkasse Köln
IBAN: DE15 3705 0299 0001 0784 92
SWIFT (BIC): COKSDE33

HRB 7073 Siegburg
VAT-IdNo. DE 218 515 479
WEEE-Reg.Nr. DE 53879641

Notes on using the product catalogue

When ordering, always state the order number.

Pictures can differ from original product.

We follow ZVEI terms of delivery, see on www.zera.de